

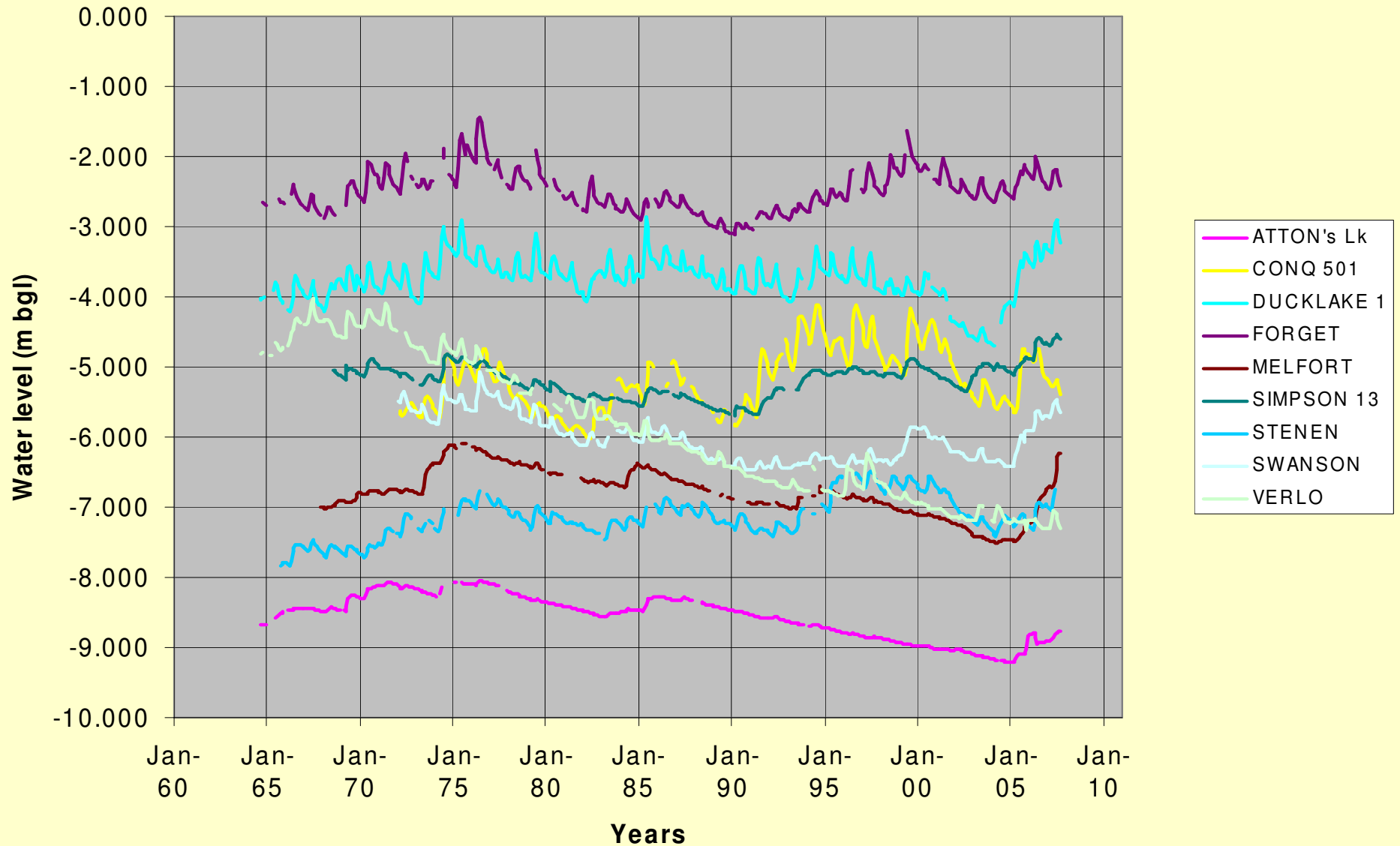
van der Kamp:

Characterizing
drought:

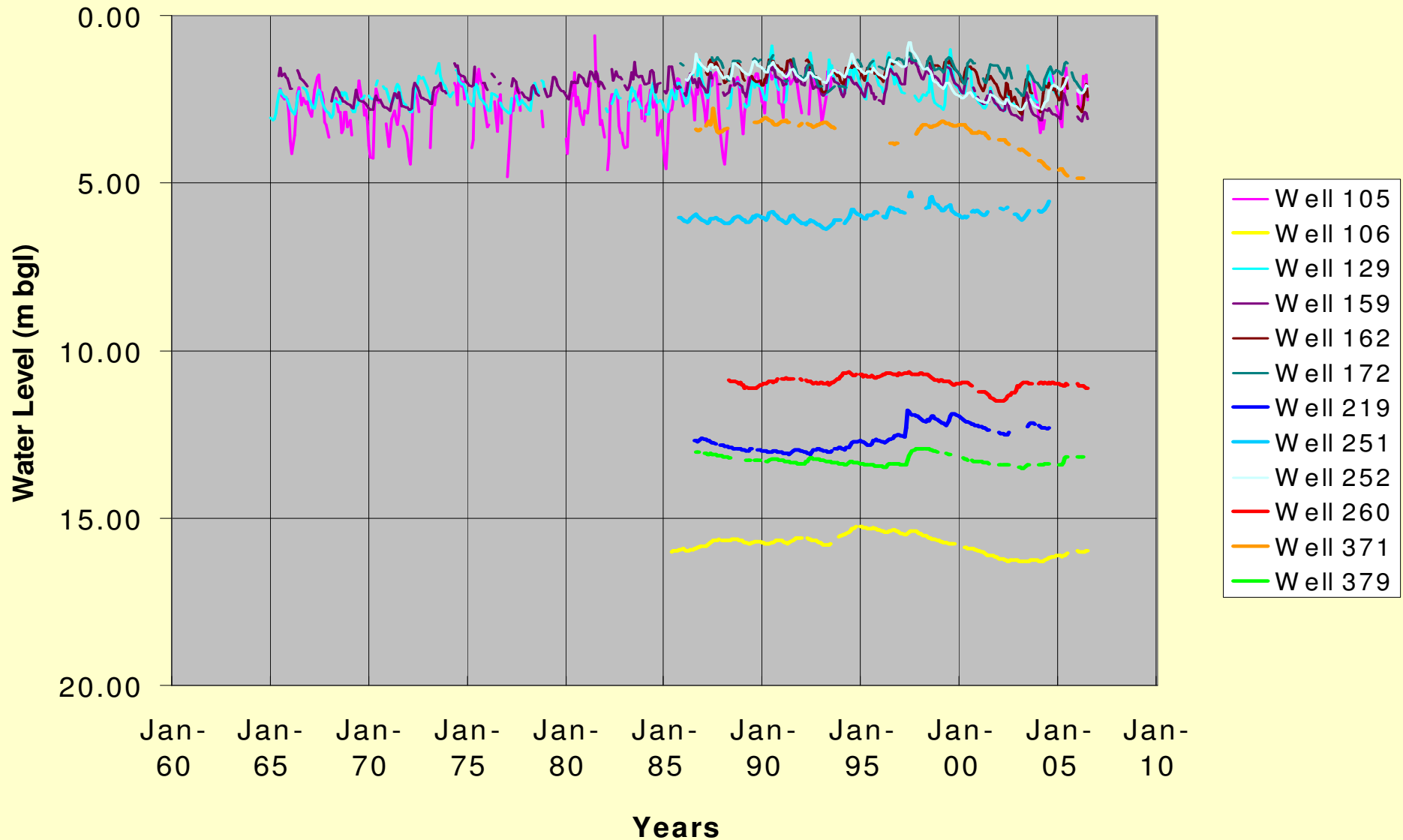


- **groundwater levels** – water level records for shallow provincial observation wells (with Sauchyn, U of Regina).
- prairie pond counts
- prairie lake levels

Shallow observation wells in SK – water level records 1964-2007: water table depths below ground level (m)

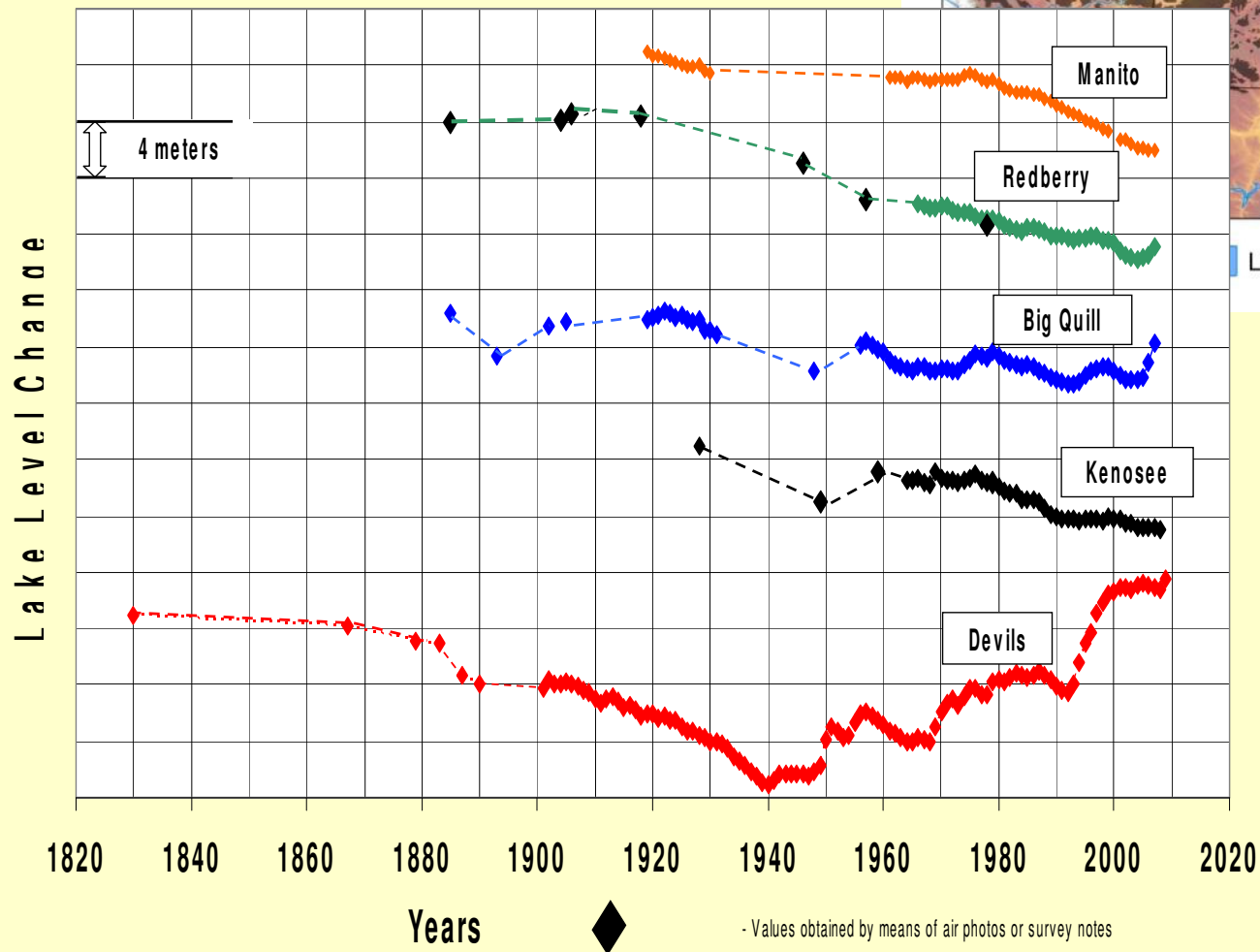
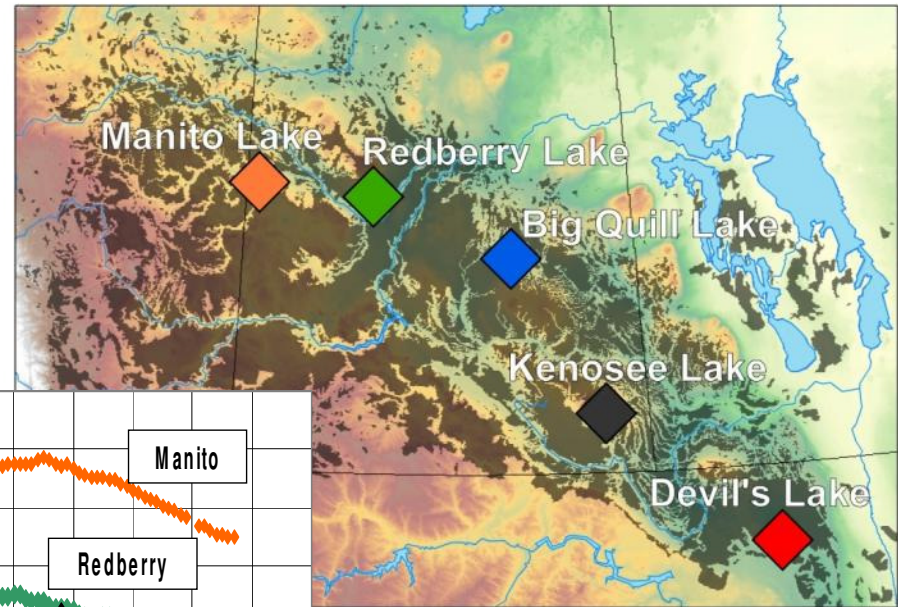


Shallow observation wells in AB – water level records 1965-2006: water table depths below ground level (m)



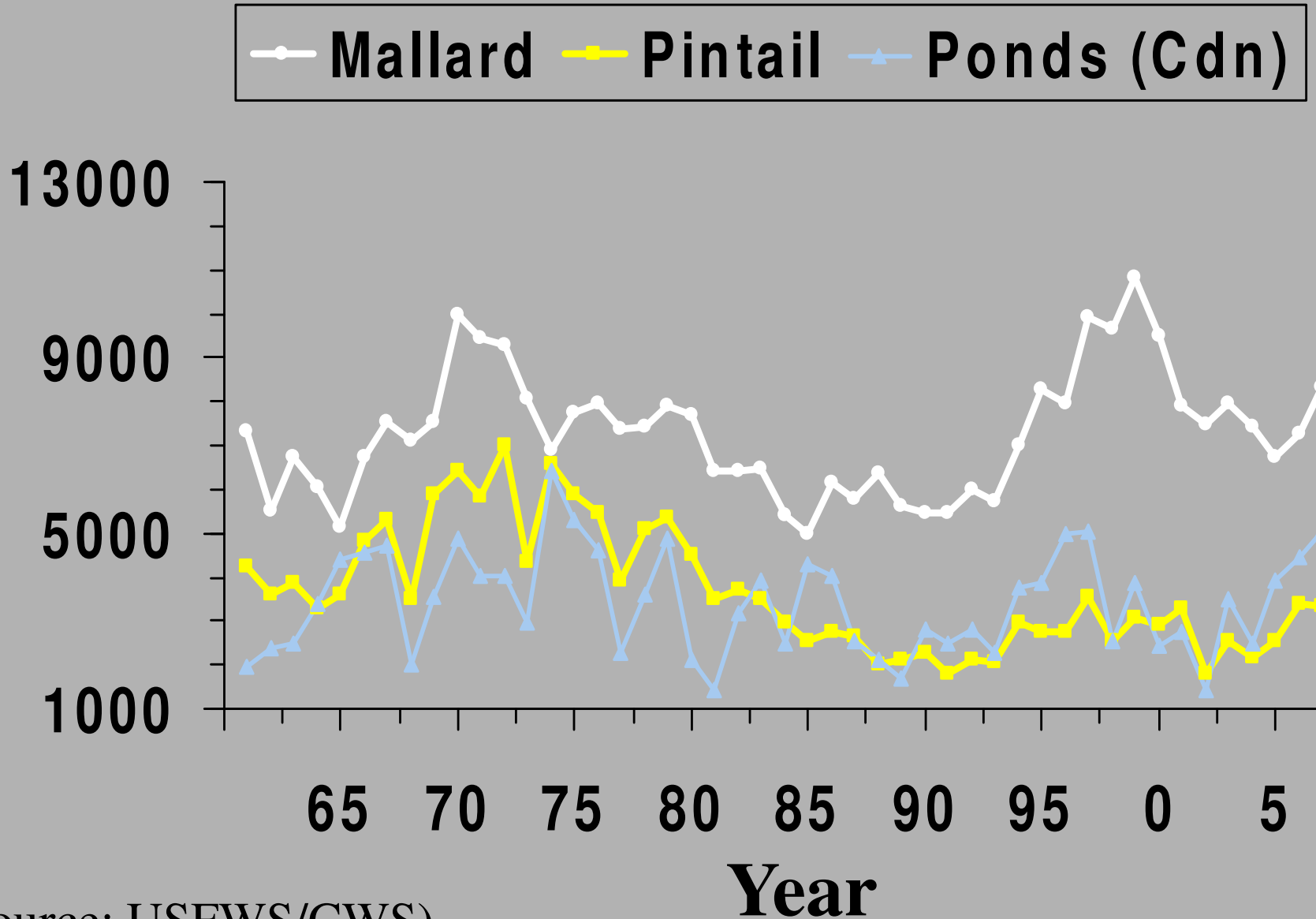
Prairie lakes 1820 – 2009:

The water levels in Canadian prairie lakes have been falling while nearby Devil's Lake (ND) is rising since 1940:



Lakes Non Contributing Drainage Areas
Drainage Data from the Prairie Farm Rehabilitation Administration (PFRA)

Ducks/Ponds in Canadian prairie region (thousands)



(Source: USFWS/CWS)

St. Denis National Wildlife Area (NWA), Wetland SD50

